

Accurate Quantitative Physics-of-Failure Approach to Integrated Circuit Reliability

Edward Wyrwas
DfR Solutions, LLC
College Park, MD

Lloyd Condra
The Boeing Company
Seattle, WA

Avshalom Hava
Motorola
Tel-Aviv, Israel

Abstract

Modern electronics typically consist of microprocessors and other complex integrated circuits (ICs) such as FPGAs, ADCs, and memory. They are susceptible to electrical, mechanical and thermal modes of failure like other components on a printed circuit board, but due to their materials, complexity and roles within a circuit, accurately predicting a failure rate has become difficult, if not impossible. Development of these critical components has conformed to Moore's Law, where the number of transistors on a die doubles approximately every two years. This trend has been successfully followed over the last four decades through reduction in transistor sizes creating faster, smaller ICs with greatly reduced power dissipation. Although this is great news for developers and users of high performance equipment, including consumer products and analytical instrumentation, a crucial, yet underlying reliability risk has emerged. Semiconductor failure mechanisms, which are far worse at these minute feature sizes (tens of nanometers), result in higher failure rates, shorter device lifetimes and unanticipated early device wearout. This is of special concern to users whose requirements include long service lifetimes and rugged environmental conditions, such as aerospace, defense, and other high performance (ADHP) industries. To that end, the Aerospace Vehicle Systems Institute (AVSI) has conducted research in this area, and DfR Solutions has performed much of the work as a contractor to AVSI.

Physics-of-Failure (PoF) knowledge and an accurate mathematical approach which utilizes semiconductor formulae, industry accepted failure mechanism models, and device functionality can access reliability of those integrated circuits vital to system stability. Currently, four semiconductor failure mechanisms that exist in silicon-based ICs are analyzed: Electromigration (EM), Time Dependent Dielectric Breakdown (TDDB), Hot Carrier Injection (HCI), and Negative Bias Temperature Instability (NBTI). Mitigation of these inherent failure mechanisms, including those considered wearout, is possible only when reliability can be quantified. Algorithms have been folded into a software application not only to calculate a failure rate, but also to produce confidence intervals and lifetime curves, using both steady state and wearout failure rates, for the IC under analysis. The algorithms have been statistically verified through testing and employ data and formulae from semiconductor materials (including technology node parameters), circuit fundamentals, transistor behavior, circuit design and fabrication processes. Initial development has yielded a user friendly software module with the ability to address silicon-based integrated circuits of the 0.35 μm , 0.25 μm , 0.18 μm , 0.13 μm and 90nm technology nodes.

INTRODUCTION

In the ADHP industries, there is considerable interest in assessing the long term reliability of electronics whose anticipated lifetimes extend beyond those of consumer "throw away" electronics. Because complex integrated circuits within their designs may face wearout or even failure within the period of useful life, it is necessary to investigate the effects of use and environmental conditions on these components. The main concern is that submicron process technologies drive device wearout into the regions of useful life well before wearout was initially anticipated to occur. The continuous scaling down of semiconductor feature sizes raises challenges in electronic circuit reliability prediction. Smaller and faster circuits cause higher current densities, lower voltage tolerances and higher electric fields, which make the devices more vulnerable to early failure. Emerging new generations of electronic devices require improved tools for reliability prediction in order to investigate new manifestations of existing failure mechanisms, such as NBTI, EM, HCI, and TDDB.

Working with AVSI, DfR Solutions has developed an integrated circuit (IC) reliability calculator using a multiple failure mechanism approach. This approach successfully models the simultaneous degradation behaviors of multiple failure mechanisms on integrated circuit devices. The multiple mechanism model extrapolates independent acceleration factors for each semiconductor mechanism of concern based on the transistor stress states within each distinct functional group. Integrated circuit lifetime is calculated from semiconductor materials and technology node, IC complexity, and operating conditions.

A major input to the tool is integrated circuit complexity. This characteristic has been approached by using specific functionality cells called functional groups. The current set of functional groups covers memory-based devices and analog-to-digital conversion circuitry. Technology node process parameters, functional groups and their functionality, and field/test operating conditions are used to perform the calculations. Prior work verified the statistical assessment of the algorithms for aerospace electronic systems and confirmed that no single semiconductor failure mechanism dominates failures in the field.

Two physics-of-failure approaches are used within the tool to determine each of four semiconductor failure mechanisms' contribution to the overall device failure rate. The tool calculates a failure rate and also produces confidence intervals and a lifetime curve, using both steady state and wearout failure rates, for the part under analysis.

Reliability prediction simulations are the most powerful tools developed over the years to cope with these challenging demands. Simulations may provide a wide range of predictions, starting from the lower-level treatment of physics-of-failure (PoF) mechanisms up to high-level simulations of entire devices [1, 2]. As with all simulation problems, primary questions need to be answered, such as: "How accurate are the simulation results in comparison to in-service behavior?" and "What is the confidence level achieved by the simulations?" Thus the validation and calibration of the simulation tools becomes a most critical task. Reliability data generated from field failures best represents the electronic circuit reliability in the context of the target system/application. Field failure rates represent competing failure mechanisms' effects and include actual stresses, in contrast to standard industry accelerated life tests.

In this paper, the failure rates of recorded field data from 2002 to 2009 were determined for various device process technologies and feature sizes (or "technology nodes"). These failure rates are used to verify the PoF models and a competing failure approach, as implemented in the software. Comparison of the actual and simulated failure rates shows a strong correlation. Furthermore, comparing the field failure rates with those obtained from the standard industry High Temperature Operating Life (HTOL) Test reveals the inadequacy of the HTOL to predict integrated circuit (IC) failure rates. The validation process and its data sources are illustrated in Figure 1.

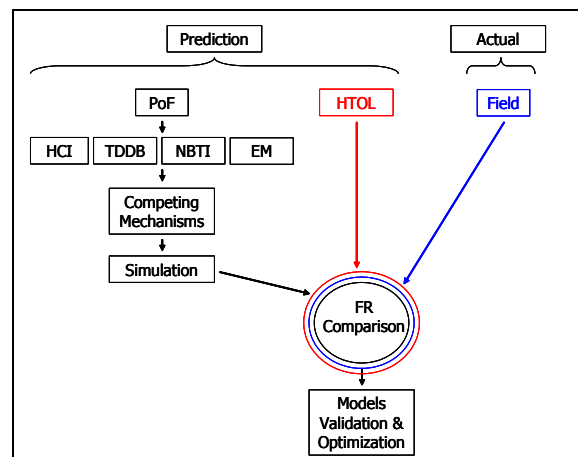


Figure 1: The data sources used for ICs reliability prediction based PoF models and simulation validation

Background

Semiconductor life calculations were performed using an integrated circuit reliability prediction software tool developed by DfR Solutions in cooperation with AVSI. The software uses component accelerated test data and physics-of-failure (PoF) based die-level failure mechanism models to calculate the failure rate of integrated circuit components during their useful lifetime. Integrated circuit complexity and transistor behavior are contributing factors to the calculation of the failure rate. Four failure mechanisms are modeled in this software using readily available, published models from the semiconductor reliability community and NASA/Jet Propulsion Laboratory (JPL) as well as research from the University of Maryland, College Park. These mechanisms are Electromigration (EM), Time Dependent Dielectric Breakdown (TDDB), Hot Carrier Injection (HCI) and Negative Bias Temperature Instability (NBTI). Taking the reliability bathtub curve (see Figure 2) into consideration, research shows that EM and TDDB are considered steady-state failure modes (constant random failure) where as HCI and NBTI have wearout behavior (increasing failure rate).

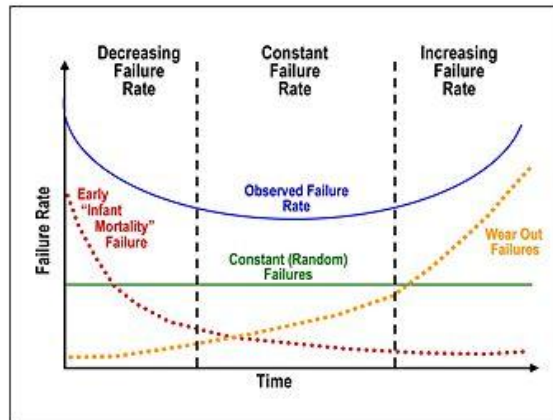


Figure 2: Reliability Bathtub Curve

Each of these failure mechanisms is driven by a combination of temperature, voltage, current, and frequency. Traditional reliability predictions assume temperature, and sometimes voltage as the only accelerators of failure. Each failure mechanism affects the on-die circuitry in a unique way. Therefore, each is modeled independently and later combined with the others using associated proprietary weighting factors. This software uses circuit complexity, test and field operating conditions, derating values, and transistor behavior as mathematical parameters. Since there is not one dominant parameter set, each mechanism could have the largest contribution to a component's failure rate depending on the use conditions. In general, there is no dominant failure mechanism - and thus for a specific component, any combination of the four mechanisms can affect it.

Failure rates were calculated using a specialized set of time to failure (TTF) equations. Time to Fail is the approximate reciprocal of failure rate. Mean time to failure (MTTF) is the mean or expected value of the probability distribution defined as a function of time. MTTF is used with non-reparable systems, like an integrated circuit. Non-reparable systems can fail only once. For reparable systems, like a re-workable printed circuit board or assembly, mean time between failures (MTBF) is used as the metric for probability distribution. Repairable systems can fail several times. In general, it takes more time for the first failure to occur than it does for subsequent failures to occur. The mathematics are the same for MTTF and MTBF. Since this analysis method is for integrated circuits, they can be replaced on the assembly, but they themselves are non-reparable circuitry.

Reliability Effects of Scaling

Smaller and faster circuits have higher current densities, lower voltage tolerances and higher electric fields, which make integrated circuits more vulnerable to electrically based failure. New generations of electronic devices and circuits demand new means of investigation to check the possibility of introducing new problems or new versions of old issues. New devices with new designs and materials require failure analysis to find new models for both individual failure mechanism and also the possible interaction between them. Understanding these potential interactions is particularly important and requires serious investigation.

In the sub-micrometer region, the demand for higher performance is in conflict with reliability. Proper tradeoffs in the early design stage are a dominating challenge. After performing a quick and effective reliability analysis (like the one performed for this project), both a lifetime estimation for the device and a failure mechanism dominance hierarchy are achieved. Using reliability knowledge and improvement techniques, higher reliability integrated circuits can be developed using two methods: suppression of die-level failure mechanisms and the adjustment of circuit structures. This has been realized for electromigration (through Black's equation) using design techniques, however, it is counter-productive across industry in the aim of device scaling to adjust transistor sizes. Redesign of transistor architecture and circuit schematics is too resource intensive both in time and costs to be the corrective action for reliability concerns. The end user must decide what reliability goals need to be achieved; more so, it has become the user's responsibility to determine how to achieve those goals without any influence on component design, manufacturing, or quality. This type of reliability assessment is crucial for the end user as adjustments to electrical conditions and thermal management seem to be the only way to improve reliability of modern technology nodes. The tradeoff in performance can be significantly reduced by using devices from larger technology nodes as they provide larger operating tolerances and the architectures necessary to reduce the effects of multiple mechanism degradation behaviors.

As technology shifts to the smaller nodes, the operating voltage of the device is not reduced proportionally with the gate oxide thickness, which results in a higher electric field; moreover, the increasing density of transistors on a chip causes more

power dissipation and in turn increases operating temperature through self-heating. Conversely, introducing nitrogen into the dielectric to aid in gate leakage reduction together with boron penetration control has its own effect - linearly worsening NBTI and other modes of degradation. Because the threshold voltage of new devices is not being reduced proportionally to the operating voltage, there is more degradation for the same threshold voltage.

RELIABILITY MODELING AND SIMULATION

History

There has been steady progress over the years in the development of a physics-of-failure understanding of the effects that various stress drivers have on semiconductor structure performance and wearout. This has resulted in better modeling and simulation capabilities. Early investigators sought correlations between the degradation of single device parameters (e.g. V_{th} , V_{dd} or I_{sub}) and the degradation of parameters related to circuit performance such as the delay between read and write cycles. It was quickly realized that the degradation of a broad range of parameters describing device performance had to be considered, rather than just a single parameter [1]. Most of the simulation tools tend to simulate a single failure mechanism such as Electromigration [4]-[5], TDDDB [6], NBTI [7]-[8] and HCI [9]. System-level simulators attempting to integrate several mechanisms into a single model have been developed as well. The latest circuit design tools, such as Cadence Ultrasim and Mentor Graphics Eldo, have integrated reliability simulators. These simulators model the most significant physical failure mechanisms and help designers address the lifetime performance requirements. However, inadequacies, such as complexity in the simulation of large-scale circuits and a lack of prediction of wearout mechanisms, hinder broader adoption of these tools [10].

Validation Concerns

Reliability simulations are commonly based on combinations of PoF models, empirical data and statistical models developed over the years by different research groups and industries. The inevitable consequence of a wide range of models and approaches is a lack of confidence in the predictions obtained for any given model. From the point of view of a real-world end-user, single failure mechanism modeling and simulation is less meaningful than the system level reliability.

Validation and calibration of simulations is accomplished by comparing simulation predictions with empirical data obtained from laboratory tests or by analyzing field data (or both). To evaluate the reliability of their devices, semiconductor manufacturers use laboratory tests such as environment stress screens (ESS), highly accelerated life testing¹ (HALT), HTOL and other accelerated life tests (ALT). Several concerns cause doubts about the prediction accuracy derived from such tests. The assumption of single failure mechanism is an inaccurate simplification of actual failure dynamics. Furthermore, ALT tests based on sampling a set of devices have the inherent problem of a lack of statistical confidence in the case of zero observed failures. Finally, ALT tests can only mimic actual field conditions to estimate real-world reliability and extrapolation from test environmental stresses to field stresses can be misleading [11]-[13].

FAILURE MECHANISMS AND MODELS

Introduction

The dominant failure mechanisms in Si-based microelectronic devices that are most commonly simulated are EM, TDDDB, NBTI and HCI. Other degradation models do exist but are less prevalent. These mechanisms can be generally categorized as either Steady State Failure Modes (EM and TDDDB) and Wearout Failure Modes (NBTI and HCI) [12]. A brief explanation of each failure mechanism is necessary to understand their contribution to the overall device failure rate.

Steady State Failure Modes

Electromigration can lead to interconnect failure in an integrated circuit. It is characterized by the migration of metal atoms in a conductor in the direction of the electron flow. Electromigration causes opens or voids in some portions of the conductor and corresponding hillocks in other portions [4]-[5], [11].

Time Dependent Dielectric Breakdown is caused by the formation of a conducting path through the gate oxide to the substrate due to an electron tunneling current. If the tunneling current is sufficient, it will cause permanent damage to the oxide and surrounding material. This damage will result in performance degradation and eventual failure of the device. If the tunneling current remains very low, it will increase the field necessary for the gate to turn on and impede its functionality. The gate dielectric breaks down over a long period of time for devices with larger feature sizes (>90 nm) due to a comparatively low electric field. Although core voltages have been scaled down as feature sizes have shrunk, supply voltages have remained constant. These field strengths are an even greater concern since high fields exacerbate the effects of TDDDB [6], [11].

¹Highly Accelerated Life Testing (HALT) should not be construed as a life test. HALT is a stress test used to determine the operating margins, destructive limits and a factor of safety of a device in regard to thermal and vibration exposure.

Wearout Failure Modes

Negative Bias Temperature Instability occurs only in pMOS devices stressed with a negative gate bias voltage while at elevated temperatures. Degradation occurs in the gate oxide region allowing electrons and holes to become trapped. Negative bias is driven by smaller electric fields than hot carrier injection, which makes it a more significant threat at smaller technology nodes where increased electric fields are used in conjunction with smaller gate lengths. The interface trap density generated by NBTI is found to be more pronounced with thinner oxides [7]-[8], [11].

Hot Carrier Injection occurs in both nMOS and pMOS devices stressed with drain bias voltage. High electric fields energize the carriers (electrons or holes), which are injected into the gate oxide region. Like NBTI, the degraded gate dielectric can then more readily trap electrons or holes, causing a change in threshold voltage, which in turn results in a shift in the subthreshold leakage current. HCI is accelerated by an increase in bias voltage and is the predominate mechanism at lower stress temperatures [9], [11]. Therefore, hot carrier damage, unlike the other failure mechanisms, will not be accelerated by HTOL tests, which are commonly used for accelerated life testing [13].

Trending Analysis of Failure Mechanisms

A trending study was performed to understand the risk associated with reduction in feature size to facilitate better design decisions and mitigation strategies. Five component types were identified:

1. Microprocessor (MPU) - No change in core voltage per node
2. Microprocessor (CPU) - Different core voltage per node
3. Static Random Access Memory (SRAM)
4. ASIC Microcontroller
5. Analog to Digital Converter (ADC)

One component of each type from each of five technology nodes (0.35 μ m, 0.25 μ m, 0.18 μ m, 0.13 μ m and 90nm) was selected for analysis to show lifetime trends. The components selected are industrial grade. Thermal characteristics were researched and electrical parameters, commonly found on the component's datasheet, were identified for the calculations. Component complexity and electrical characteristics were extracted from corresponding component documentation for use in the calculator. The results of the calculations are used to correlate expected life for each component to technology node for a specified use environment (identified as 65°C).

Research showed that conductor material improvements were made around the 0.18 micron node and later to reduce the effects of electromigration. The resulting trend shows a reduction in failure rate from electromigration. However, as feature sizes decrease, the wearout effects of hot carrier injection and negative bias temperature instability become more prevalent. Two failure models for TDDDB are used. Research shows that the applicable electro-chemical models for TDDDB follow the dielectric (oxide) thickness at each node. A change occurs when scaling passes 5nm in thickness (corresponding to the 0.13 micron node). TDDDB becomes a constant failure rate as oxide thickness approaches 1nm. Above 5nm, however, failure rate increases as the thickness approaches this turn-over point. Differences in trending can be seen for each failure mechanism:

- Electromigration trends (plateauing) correspond to conductor materials which have improved to negate the effects of electromigration
- TDDDB has two separate increasing trends above and below an oxide thickness of 5nm
- The effects of both HCI and NBTI increase with feature scaling

The combined failure rate graph for the microprocessor device type is shown in Figure 3. This graph shows that a technology node dependent trend does exist for failure rates. As feature sizes are scaled down, failure rate does increase. The microprocessor device type is a prime example of this trending as the electrical and thermal conditions of these parts are consistent over each technology node.

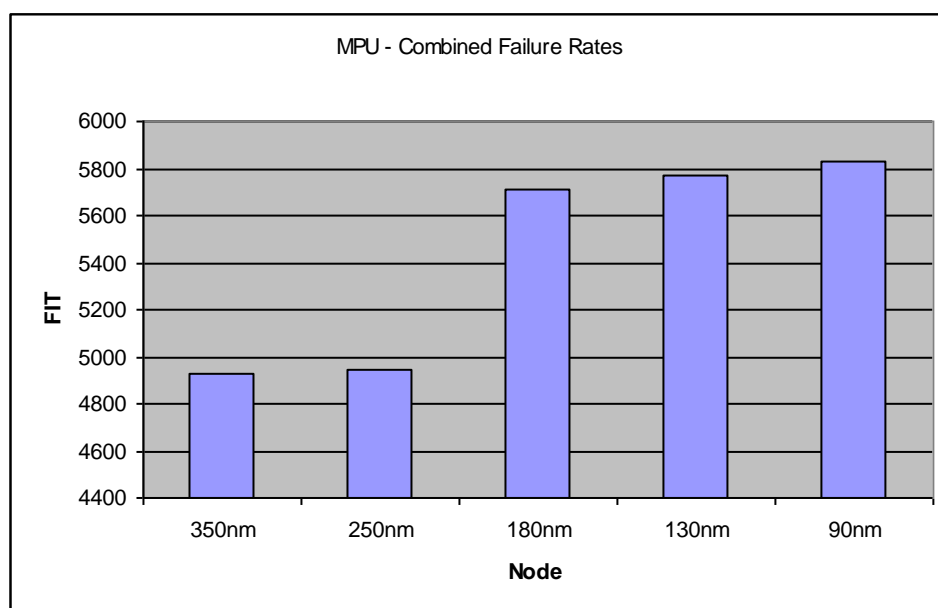


Figure 3: Combined Failure Rates for MPU Component Type

The science behind the visible trends of each failure mechanism across the technology nodes is worth discussing. Consider 90nm technology as an appropriate starting-point for future technology node trending. A main differentiation between 0.35 micron and 90nm is conductor materials. Electromigration is directly influenced by this, which is why industry has made process improvements to both reduce the effects of EM through metallurgical improvements, and development of design rules to mitigate EM. The former increases the activation energy required to start degradation from $\sim 0.6\text{eV}$ to $\sim 0.75\text{eV}$. However, even with design rules, i.e. Black's law, the latter can only forestall EM for a finite period of time by ensuring properly laid out geometries of traces and interconnects on die. It is unknown at this point in time whether or not any more improvements will be made to conductor metals (Al, Al + Cu) beyond what has already been done. The overall trend of electromigration is lower reliability and lifetime trending which shows reduction in lifetimes as a result of feature scaling. However, it can be considered a constant additive to failure rate because the trend is two plateaus (three or more if the material changes again). The failure rate constituent from EM will likely be the same for future nodes.

Although small compared to EM and TDDB at these nodes, hot carrier injection (HCI) and negative bias temperature instability (NBTI) contributions to failure rates increase as features are scaled down. Hot carrier injection will be almost negligible at high temperatures, i.e. 65°C operating environment. Although 65nm and 45nm process data are not currently included in this calculator, the projected contribution to failure rate of both of these failure mechanisms will surely increase and exceed those of EM and TDDB (which are also constant, as mentioned above).

The inverted trend of TDDB has to do with voltage tolerances of each component type. Above 5nm oxide thickness (0.25 micron and 0.35 micron nodes), the influence of TDDB is directly related to the electric field on the gate and in turn the voltage on it. The industry accepted reliability models at these nodes are different from that at 0.18 micron, 0.13 micron and 90nm. TDDB is trending toward a time independent mechanism and will induce random failures instead of acting as a wearout function. Reasons for this include all possible failure sites being sufficiently large within the bounds of the electric field to cause instantaneous failure. The effects of TDDB from 0.18 micron down to likely the $\sim 32\text{nm}$ node will be a plateau just like EM. It is driven by voltage rather than magnitude of the electric field on the gate oxide. Therefore, when considering "old technology" as 180, 130 and even 90nm compared to the high performance 65 and 45nm, the effects of both EM and TDDB will be the same. For trending purposes, these contributions could be subtracted out altogether. This would result in increasing failure rate trends for all analyzed device types as feature sizes are scaled down.

THE SIMULATION TOOL

Approach

The simulation tool used for this research is a web-based application based on recent PoF circuit reliability prediction methodologies that were developed by the University of Maryland (UMD), in cooperation with AVSI, for 130 nm and 90 nm devices [14]. The two methods developed are referred to by the acronyms of FaRBS (Failure-Rate-Based SPICE [spacecraft, planet, instrument, C-matrix, events]) and MaCRO (Maryland Circuit Reliability-Oriented). FaRBS is a reliability prediction process that uses accelerated test data and PoF based die-level failure mechanism models to calculate the failure rate of integrated circuit components during their useful lifetime. As its name implies, it uses mathematical techniques to determine the failure rate of an integrated circuit [15]. MaCRO contains SPICE (Simulation Program with Integrated Circuit Emphasis) analyses using several different commercial applications, wearout models, system reliability models, lifetime qualification, and reliability and performance tradeoffs in order to achieve system and device reliability trends, prediction and analysis [6]. The simulation tool implements two simplified approaches to compute reliabilities:

- Independent of Transistor Behavior (ITB)
- Dependent on Transistor Behavior (DTB)

These approaches are used to determine each failure mechanism's contribution to overall device failure. The ITB approach makes two assumptions:

1. In each integrated circuit, each failure mechanism has an equal opportunity to initiate a failure
2. Each failure mechanism can take place at a random interval during the time of operation

Conversely, DTB utilizes back-end SPICE simulation to determine these contributions based on transistor behavior and circuit function. Using these mechanism weighting factors, sub-circuit cell counts, and transistor quantities, an overall component failure rate is calculated.

The software assumes that all the parameters for these models are technology node dependent. Although many different intermediate process technologies can be identified for devices under analysis, only major nodes are used. Nodes considered major nodes of CMOS processes on the International Technology Roadmap for Semiconductors (ITRS) reflect a trend of 70% scaling every 2-3 years and falls within the projections of Moore's Law². It is assumed that the technology qualification (process qualification) has been performed and at least one screening process has been applied before a device is packaged. This reliability prediction covers the steady-state random failures and wearout portions of the bathtub curve.

Mathematical Theory

Each failure mechanism described above would have a failure rate, λ_i , driven by a combination of temperature, voltage, current, and frequency. Parametric degradation of each type affects the on-die circuitry in its own unique way; therefore, the relative acceleration of each one must be defined and averaged for the applied condition. The failure rate contribution of each can be normalized by taking into account the effect of the weighted percentage of that failure rate. We ignore interactions between failure mechanisms for practical reasons although more rigorous studies of potential interactions could be made in the future. For the four mechanisms of EM, HCI, NBTI and TDDB, the normalized failure rate can be defined as λ_{EM} , λ_{HCI} , λ_{NBTI} and λ_{TDDB} respectively. In order to achieve more accuracy in the overall failure rate estimation, it is useful to split the IC into equivalent function sub-circuits and refer to it as a system of functional group cells, for example: 1 bit of SRAM, 1 bit of DRAM, one stage of a ring oscillator, and select modules within Analog-to-Digital circuitry (ADC), etc. For each functional group type, the failure rate can be defined as a weighted summation of each failure rate type multiplied by a normalization constant for the specific failure mechanism.

$$\lambda_F^1 = \sum (K_{i,F} \times \lambda_i) \quad (1)$$

Where λ_F^1 is the failure rate of one unit of functional group, F . $K_{i,F}$ is a constant defined by the weight percentage of functional group F as it affects the i^{th} failure mechanism and λ_i is the normalized failure rate of any failure mechanism. For example, the failure rate of electromigration affecting a DRAM group would be $K_{EM,DRAM} \times \lambda_{EM}$, where $K_{EM,DRAM}$ is a

² In reality, the ITRS approach has become more nuanced as feature sizes have become smaller. While that is recognized here, it is beyond the scope of this work to account for those nuances and feature size references are generalized.

constant defining the weight percentage that DRAM has on the normalized electromigration failure rate. The overall DRAM failure rate per functional group, λ_{DRAM}^1 , is:

$$\lambda_{DRAM}^1 = K_{EM,DRAM} \times \lambda_{EM} + K_{HCI,DRAM} \times \lambda_{HCI} + K_{NBTI,DRAM} \times \lambda_{NBTI} + K_{TDDb,DRAM} \times \lambda_{TDDb} \quad (2)$$

Where $K_{EM,DRAM}$ is a constant defined by the weight percentage that DRAM has on EM, λ_{EM} is the normalized failure rate of EM, $K_{HCI,DRAM}$ is a constant defined by the weight percentage that DRAM has on HCI, λ_{HCI} is the normalized failure rate of HCI, $K_{NBTI,DRAM}$ is a constant defined by the weight percentage that DRAM has on NBTI, λ_{NBTI} is the normalized failure rate of NBTI, $K_{TDDb,DRAM}$ is a constant defined by the weight percentage that DRAM has on TDDb and λ_{TDDb} is the normalized failure rate of TDDb. Considering the probability of a specific functional group being operationally active at the instance when failure occurs is a modification to Equation (1):

$$\lambda_F = P_F \times \lambda_F^1 = P_F \times \sum (K_{i,F} \times \lambda_i) \quad (3)$$

Where λ_F is the failure rate of a functional group as the cause of the potential failure of the device under analysis and P_F is the probability that that functional group was operational during failure. The total failure rate of a component, λ_T , can be defined as being equal to the summation of the total number of each functional group multiplied by the failure rate of each functional group type.

$$\lambda_T = \sum N_F \lambda_F = N \times \sum (N_F / N) \times \lambda_F = N \times \sum A_F \times \lambda_F \quad (4)$$

Where λ_T is the failure rate of the component under analysis, N_F is the total number of each functional group, N is the total number of all types of functional groups and A_F is the ratio of the number of units of the nth functional group type to the total number of functional groups that exist in the component under analysis. The prediction process is demonstrated in Figure 4.

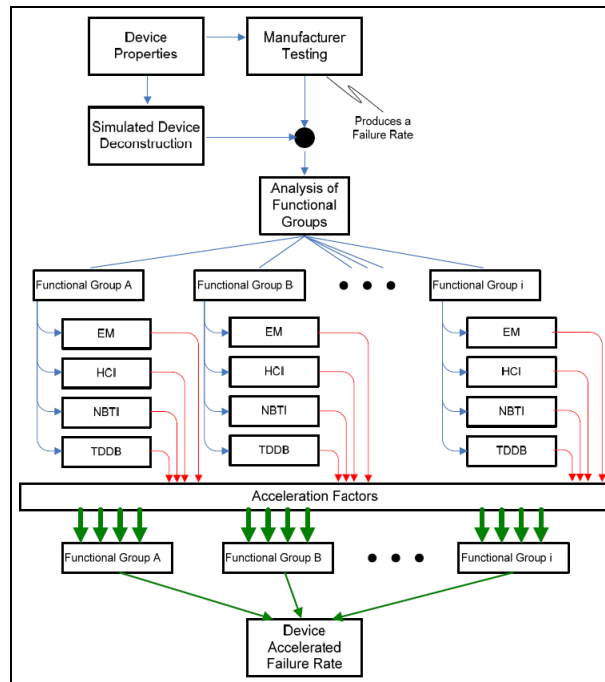


Figure 4: The simulation tool process methodology

Failure Rate Calculation

An assembly, the output from a system reliability assessment application, and/or the Bill of Materials (BOM) for an assembly is examined for complex integrated circuits that could be analyzed with the Integrated Circuit Lifetime Prediction calculator. The current limitations of the software are number of functional group types and technology node data beyond 90nm. Thermal characteristics are researched and electrical parameters, commonly found on the component's datasheet, are identified for the calculations. Component complexity and electrical characteristics are extracted from corresponding component documentation for use in the calculator. Thermal parameters for field conditions are acquired through prototyping, direct thermal measurements, and simulations.

Preliminary analysis of the device uses a process that divides an integrated circuit into smaller functional blocks to apply acceleration factors at the most basic level. Equivalent function sub-circuits are used as part of the calculator to organize the complexity of the integrated circuit being analyzed into functional group cells, i.e. one (1) bit of DRAM. As an example, the functional group block diagram for National Semiconductor's 12-bit ADC component, ADC124S021, is shown below. It contains a multiplexer group, track and hold function, control logic, and 12-bit analog-to-digital converter.

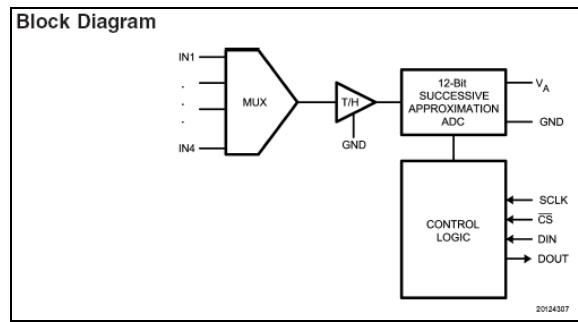


Figure 5: Functional Group Block Diagram for ADC124S021

The standard procedure for integrated circuit analysis uses high temperature operating life (HTOL) test conditions for the test conditions used for extrapolation:

- ambient temperature
- supply voltage
- core voltages

The HTOL ambient temperature was calculated for each component (except when supplied by the manufacturer). Thermal information was obtained from the datasheet and/or thermal characteristic documentation and each manufacturer's website. Using (5), junction temperature, power dissipation, and junction-to-air thermal resistance are used to calculate ambient temperature.

$$T_A = T_J - P_D * \Theta_{J-A} \quad (5)$$

Junction-to-air thermal resistance was obtained either from a component's datasheet or from thermal characteristic databases for package type and size; i.e. Texas Instruments or NXP Semiconductors websites. The ambient temperature calculation for an example component is shown in (6).

$$T_A = 85^{\circ}\text{C} - (0.446\text{W} * 51 \frac{^{\circ}\text{C}}{\text{W}}) \quad (6)$$

Inputs on the calculator are the test parameters and results from the standard JEDEC accelerated test and information pertaining to the integrated circuit:

- JEDEC Standard No. 47D³
 - 25 devices under test
 - 1000 hour test duration
 - zero (0) failures
 - 50% confidence level
- Pre- or user-defined process node parameters
- Device complexity as broken down by functional groups and quantity of cells within each functional group, where applicable
- Accelerated test information (qty. of failures, qty. of devices, test duration)
- Duty cycle of device (i.e. diurnal cycling or 50%)
- Confidence level of calculation/test
- Field and test conditions (field conditions allow for multiple operating modes)
 - ambient temperature
 - operating frequency
 - core voltage
 - supply voltage
- Failure mechanism parameters and corresponding equations

FIELD DATA

Data Source

An extensive field study was conducted in order to demonstrate the simulation tool and verify its prediction capabilities. Reliability predictions were performed based on field failures of DRAM, microcontrollers and microprocessors, as shown in Table 1.

Table 1: ICs used for the field study

Vendor Part Number	Description	Vendor	Node Technology
MT16LSDF3264HG	256MB DRAM	Micron	150 nm
M470L6524DU0	512MB DRAM	Samsung	100 nm
HYMD512M646BF8	1GB DRAM	Hynix	110 nm
MC68HC908SR12CFA	Microcontroller	Motorola/ Freescale	90 nm
RH80536GC0332MSL7EN	Pentium Processor	Intel	90 nm

The field data were extracted from a Motorola database which encompasses shipments and customers' claims. Unique identifiers of each product and failure enabled the detailed statistical field analysis. The ICs were assembled on boards belonging to a family of communication products shipped during 2002-2009. Component complexity and electrical characteristics were extracted from corresponding component documentation.

As the shipping and failures are recorded continuously, several reliability measurements can be performed. The first one is the monthly failure rate, which is expressed as:

$$\%F.R._{Month} = \frac{Monthly_Failures}{Cumulative_Deployed_Units} 100\% \quad (7)$$

The second one is the cumulative failure rate:

$$\%CUM_F.R._{Month} = \frac{Cumulative_Failures}{Cumulative_Working_Months} 100\% \quad (8)$$

If the cumulative failure rate is approximately constant, the exponential distribution may be used for times to failure. Thus, a rough estimate of the failure rate may be obtained by dividing the total number of failures by the cumulative working months:

³ Joint Electronic Devices Engineering Council, JESD 47D: Stress-Test Driven Qualification of Integrated Circuits

$$\lambda = \frac{\text{Total_Number_Failures}}{\text{Cumulative_Working_Months}} \quad (9)$$

In order to estimate the part failure rate in FIT (failures per billion device hours), the mission profile must be considered:

$$\lambda = \frac{\text{Total_Number_Failures}}{\text{Cumulative_Working_Months}} \times \frac{10^9}{\text{User_Mission_Profile}} \quad (10)$$

Field Failure Rate Calculation Illustration

The microcontroller (MC68HC908SR12CFA) is used here to illustrate the process for acquiring environmental information and determining its failure rate based on field data. A similar process was performed for the other four ICs. A total of 96 microcontrollers were replaced during a cumulative total of 595,412 working months. Figure 6 shows the failed ICs and cumulative months vs. operating time. The monthly and cumulative failure rates are displayed in Figure 7.

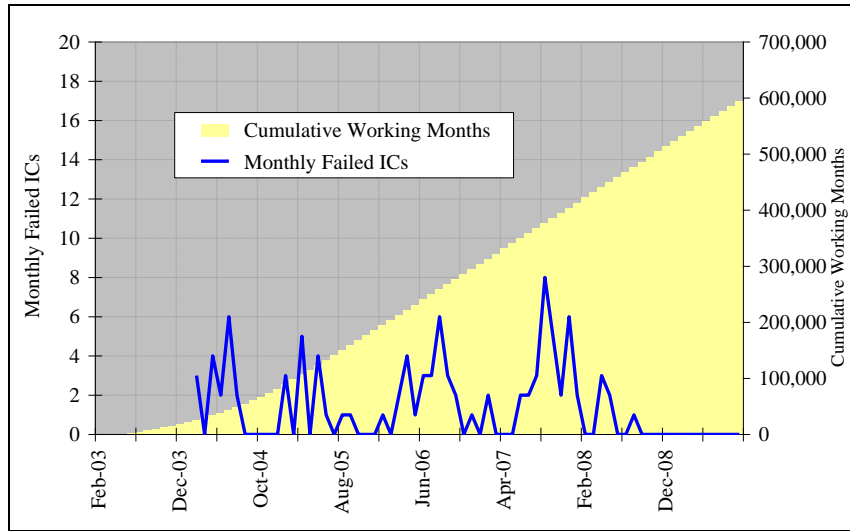


Figure 6: Failed quantity vs. cumulative working months

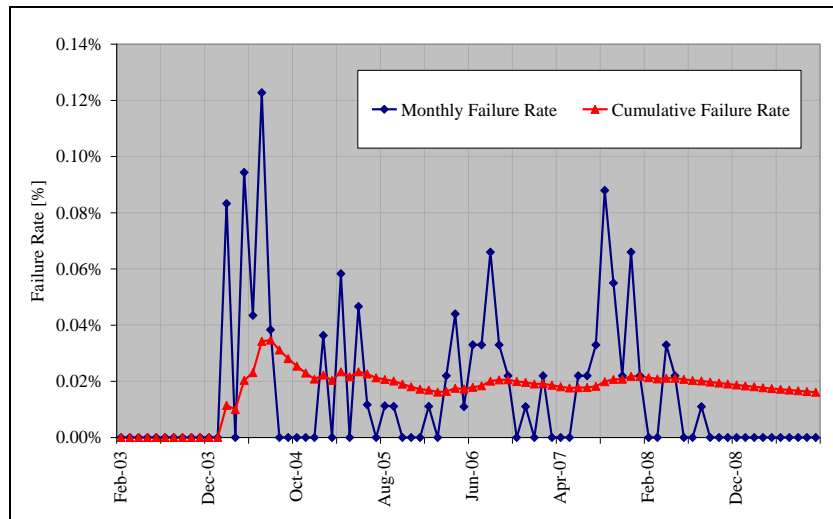


Figure 7: Monthly and cumulative failure rate for MC68HC908SR12CFA

The monthly failure rate plot is rather noisy while the cumulative plot allows visualization of the overall trend. The cumulative failure rate exhibits a steady state failure rate of approximately 0.02%. We then can calculate a rough estimation for the failure rate, λ , and the mean time to failure, $MTTF$:

$$\lambda = \frac{96}{595,412} = 1.61 * 10^{-4} \quad \text{Failure/Months} \quad (11)$$

$$MTTF = \frac{1}{\lambda} = 6,202 \quad \text{Months} \quad (12)$$

Converting the $MTTF$ from months into hours requires estimation of the user mission profile. Since the microcontroller operates 24 hours a day (730 hours per month), we can roughly estimate the card $MTTF$ as 4,527,612 hours which corresponds to 220 FIT.

$$MTTF = 6,202 * 730 = 4,527,612 \quad \text{Hours} \quad (13)$$

Weibull Analysis

Each failed IC is assigned to a single product with unique serial number. Binding the shipment data by the serial number, on one hand, and the failure data, on the other hand, enabled the following Weibull analysis. Figure 8 presents a Weibull probability plot of the time to failure with 95% confidence interval (time scale is days, not months). Start time for the failed and censored data is considered the shipment date. The failure date is considered the date on which the customer issued a claim to the depot. The sensitivity of those assumptions was analyzed and found to have a minor effect for the long term on large populations.

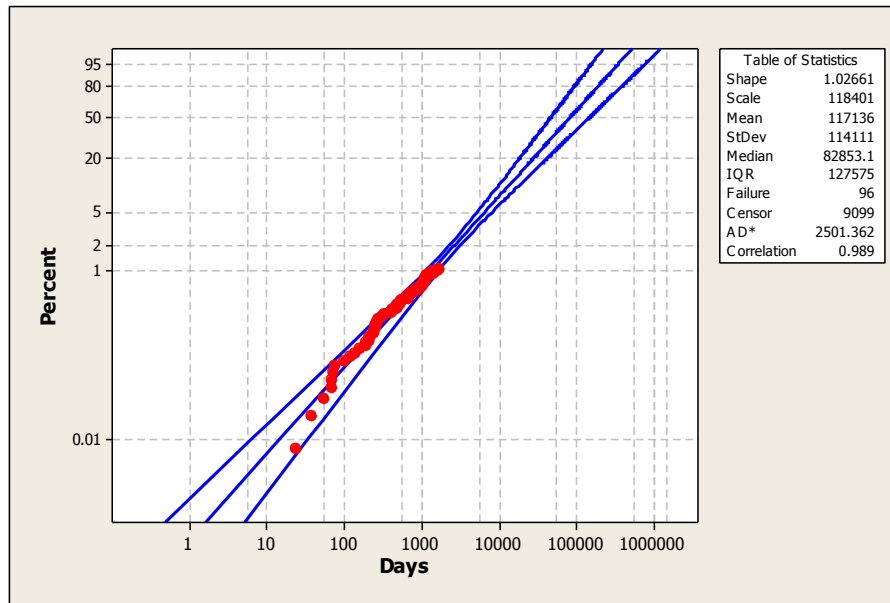


Figure 8: Weibull probability plot of Time To Failure for MC68HC908SR12CFA with 95% confidence interval

Excellent correlation to the exponential distribution was obtained, with $\beta=1.0266$. A null hypothesis of $\beta=1$ was tested in order to establish the justification for use of the exponential distribution. A Bonferroni test at confidence level of 95% provided lower and upper limits for β of 0.8758 and 1.203 respectively, with a p-value of 0.746. Thus the exponential distribution can be assumed, as shown in the following probability plot (Figure 9):

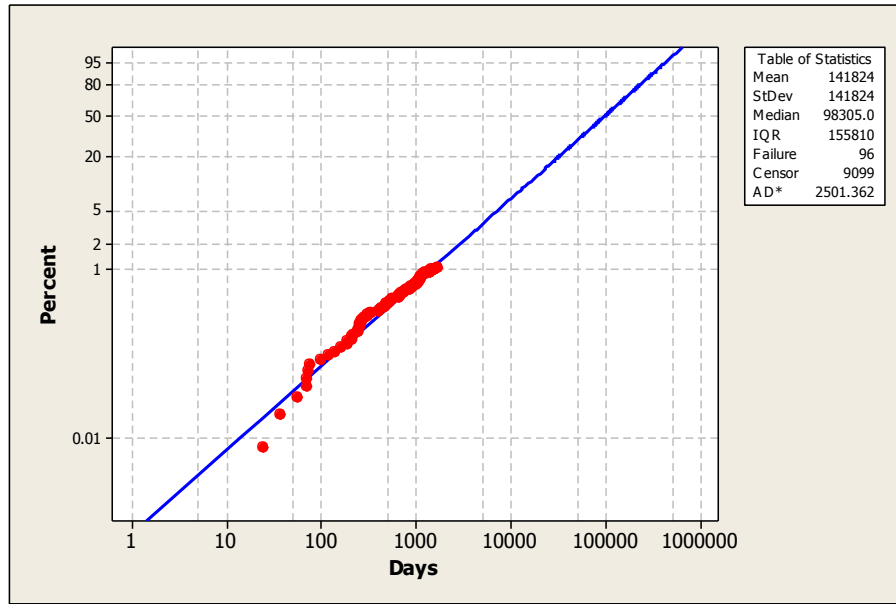


Figure 9: Exponential plot of time to failure for MC68HC908SR12CFA

Using the exponential distribution, the *MTTF* is 141,824 Days. The lower and upper confidence limits are 119,072, 168,923 respectively. Assuming 24 hours per day, the *MTTF* is equal to:

$$MTTF = 141,824 * 24 = 3,403,776 \text{ Hours} \quad (14)$$

This corresponds to 293 FIT with lower and upper confidence limits of 247 and 350 FIT respectively. This is slightly above the rough estimate of 220 FIT. Weibull analyses for all the analyzed ICs showed similar justification for the use of the exponential distribution.

VALIDATION RESULTS

The reliability calculations are based on the time domain of the host computer. Except for the microcontroller, which is stressed 24 hours a day, we assume that memory parts and the processor are partly stressed depending on the user profile. A conservative assumption is that a regular user will stress the parts two shifts/day, i.e. 16 hours/day. The predicted failure rates were calculated using the methodology described in the section *The Simulation Tool*. Field and test condition inputs were extracted from the components' datasheets. These calculator inputs are shown in Table 2. The functional group distribution of each IC was found in each component's description as provided on the datasheets. Table 3 shows the field failure rates, as obtained using Eq. (8), and the corresponding results of the predictions. Figure 10 shows the comparison of the field failure rates and the prediction results, along with the 95% confidence intervals obtained by the Weibull analysis.

Table 2: Calculator Inputs: Field and Test Conditions

Part Number	Field Temperature (°C)	Calculated Test Temperature (°C)	Vdd Field (V)	Vdd Test (V)
MT16LSDF3264HG-10EE4	42	62.28	3	3.3
M470L6524DU0-CB3	42	70.00	2.5	2.7
HYMD512M646BF8-J	42	66.68	2.6	2.7
MC68HC908SR12CFA	40	77.40	5	5.5
RH80536GC0332MSL7EN	58	99.70	1.276	1.34

Table 3: The Integrated Circuits used for the research

Part Number	Field Failure Rate	Predicted Failure Rate
MT16LSDF3264HG	689	730
M470L6524DU0	415	418
HYMD512M646BF8	821	1012
MC68HC908SR12CFA	220	249
RH80536GC0332MSL7EN	144	291

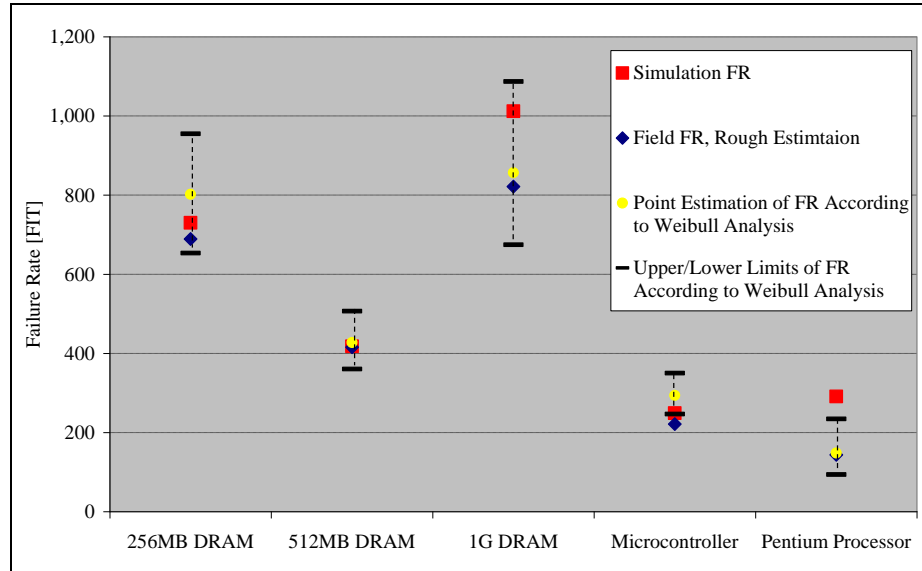


Figure 10: Comparison of the field failure rates and the simulation results with the confidence interval obtained by the Weibull analysis

It should be noted that the DRAM failure rates presented in Table 3 and Figure 10 refer to critical faults which forced the user to replace the part. They do not reflect specific rates of different kind of errors (correctable or non-correctable data errors or single event upsets from radiation) but rather a complete part failure rate.

Failure Rate based HTOL Qualification Test

JEDEC standards define a family of accelerated life tests, of which the one most commonly used for estimating component failure rate is HTOL (JEDEC Standard number 47D, “Stress-Test-Driven Qualification of Integrated Circuits”). It consists of stressing 77 pieces per qualification lot, for an extended time, usually 1,000 hours, at an accelerated voltage and temperature (typically +125°C). The stated purpose of HTOL testing is to simulate device operation at elevated temperatures and higher than nominal operating voltages to provide sufficient acceleration to simulate many years of operation at ambient temperatures (typical +55°C). The data obtained from the HTOL test are traditionally translated to a lower temperature by using the Arrhenius temperature acceleration model. In a standard HTOL where 77 parts per lot are taken from 3 different lots (total of 231 parts tested) during 1,000 hours in +125°C, the calculated acceleration factor, A_F , using the Arrhenius model would be 78 [assuming: 1) $E_a=0.7$, 2) the ambient temperature is +55°C, and 3) temperatures refer to junction]. The equivalent field time is ~18 million hours. In case of zero failures in test, the upper limit for the failure rate at 60% confidence would be 51 FIT. It is clearly apparent that the predicted failure rate, based on HTOL, is misleading.

Activation energy is the parameter used to express the degree of acceleration related to temperature. Single failure mechanisms are accompanied with unique activation energy values (JEDEC Publication No. 122B). However, it is a traditional method to use an activation energy of 0.7eV as it is generally assumed as average activation energy for failure mechanisms that occur during the useful life of a device. This useful life lies beyond the early stages of infant mortality failures (defect driven failures). Industry is widely using this value of 0.7eV in the following two cases:

1. When estimating an overall failure rate without focusing on a single failure mechanism. It is assumed to be a conservative value regarding the mixture of single mechanism activation energies.
2. When the failure mechanisms degrading a device is unknown.

The goal of HTOL is to gain maximum possible acceleration to accumulate maximum equivalent field time, with zero failures. Assuming higher activation energies will serve this goal, but will reduce the failure rate upper limit. For example, assuming activation energy of 1.0 instead of 0.7eV will raise the acceleration factor to 504 instead of 78 (6.5 times more). On the other hand the failure rate will reduce from 51 FIT to only 8 FIT, which is even more overoptimistic, see Table 4.

Table 4: Comparison of Failure Rate Calculation Methodology

Part Number	Field Failure Rate	Predicted Failure Rate	HTOL Failure Rate (0.7eV Act. Energy)	HTOL Failure Rate (1.0eV Act. Energy)
MT16LSDF3264HG	689	730	51	8
M470L6524DU0	415	418	51	8
HYMD512M646BF8	821	1012	51	8
MC68HC908SR12CFA	220	249	51	8
RH80536GC0332MSL7EN	144	291	51	8

DISCUSSION

The validation study has shown strong correlation between the field failure rates and the rates obtained by the prediction tool. The results in Figure 10 clearly demonstrate the accuracy and repeatability of the multi-mechanism model to predict the field performance of complex integrated circuits.

The simulated estimates lie well within the confidence intervals except for the Intel processor, where a small deviation of 60 FIT observed. The small deviation between the rough estimates and the point estimations obtained from the statistical plots justify the use of the exponential distribution. For memories, an average failure rate of 720 FIT was observed with an average deviation of 10% between the field and simulated failure rates. The average interval of the field failure rate (upper limit-lower limit) is 280 FIT. Considering the fact that the 512MB DRAM node technology is quite similar to the 1GB DRAM (100 nm and 110 nm accordingly), both parts actually exhibit the same failure rate of 0.8 FIT per 1 MB. In contrast, the 256MB DRAM with 689 FIT does not correspond to this projection which should have led to a failure rate of 205 FIT. This is explained by the lower accelerated test ambient temperature to which the 256MB DRAM is exposed, relative to the other two memories. Nevertheless, components whose predicted failure rate is relatively large compared to similar device types, i.e. 1GB DRAM, might be categorized as more sensitive to electro-thermal tolerances. They will be subjected to greater stresses at the peripheries of these sensitive operating ranges. Components with large operating ranges are typically operated at an average nominal value. Therefore, small fluctuations away from the mean of these larger ranges will not excessively stress the components. A graphical depiction of this is shown in Figure 11. The microcontroller and the processor experienced lower failure rates than the memories. Furthermore, the average failure rate is 220 FIT with interval of 120 FIT.

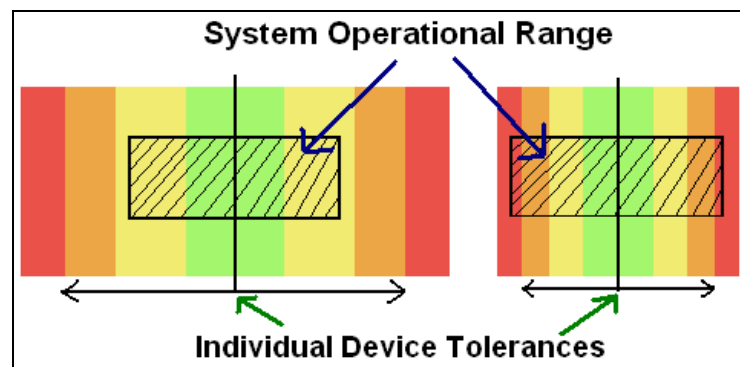


Figure 11: Graphical Representation of Device Parameter Sensitivities

In comparison to the HTOL prediction, it can be seen that standard HTOL testing should not be used for failure rate prediction, as it produces estimates that are too low. This is due to two limitations for standard HTOL: the multi-mechanism and zero failure limitations.

The multi-mechanism limitation: Ideally, yet unrealistically, a complete lifetime distribution of a component is generated under a fixed set of accelerated loading conditions and where inference about the reliability of the components under a different set of loading conditions can be made confidently, using a proven acceleration model. One accelerated test, such as HTOL, cannot stimulate all the major failure mechanisms (i.e. HCI), and the acceleration factor obtained from some of them is negligible. Under the assumption of multiple failure mechanisms, each will be accelerated differently depending on the physics for each mechanism. If a HTOL test is performed at an arbitrary voltage and temperature for acceleration based only on a single failure mechanism, then only that mechanism will be reasonably accelerated. In that instance, which is generally true for most devices, the reported FIT rate (especially one based on zero failures) will be meaningless with respect to other failure mechanisms.

The zero failure limitation: The fact that HTOL is a zero-failure test limits the statistical confidence of the predicted failure rate. Zero failures in HTOL is a poor indicator of the expected failure rate. To obtain statistical confidence, failures must be observed.

ACKNOWLEDGEMENTS

This work was performed by DfR Solutions and initially funded by Aero Engine Controls, Boeing, General Electric, the National Aeronautics and Space Administration, the Department of Defense, and the Federal Aviation Administration in cooperation with the Aerospace Vehicle Systems Institute (AVSI) for the 0.13 μ m and 90nm technology nodes. DfR is now working to extend the capability of the tool into smaller technology nodes, including 65nm, 45nm, and 32nm. Several commercial organizations have indicated a willingness to assist with the development and validation of 45nm technology through IC test components and acquisition of field failure data. Continued development would incorporate this information and would expand into functional groups relevant for analog and processor based (e.g. DSP and FPGA) integrated circuits.

REFERENCES

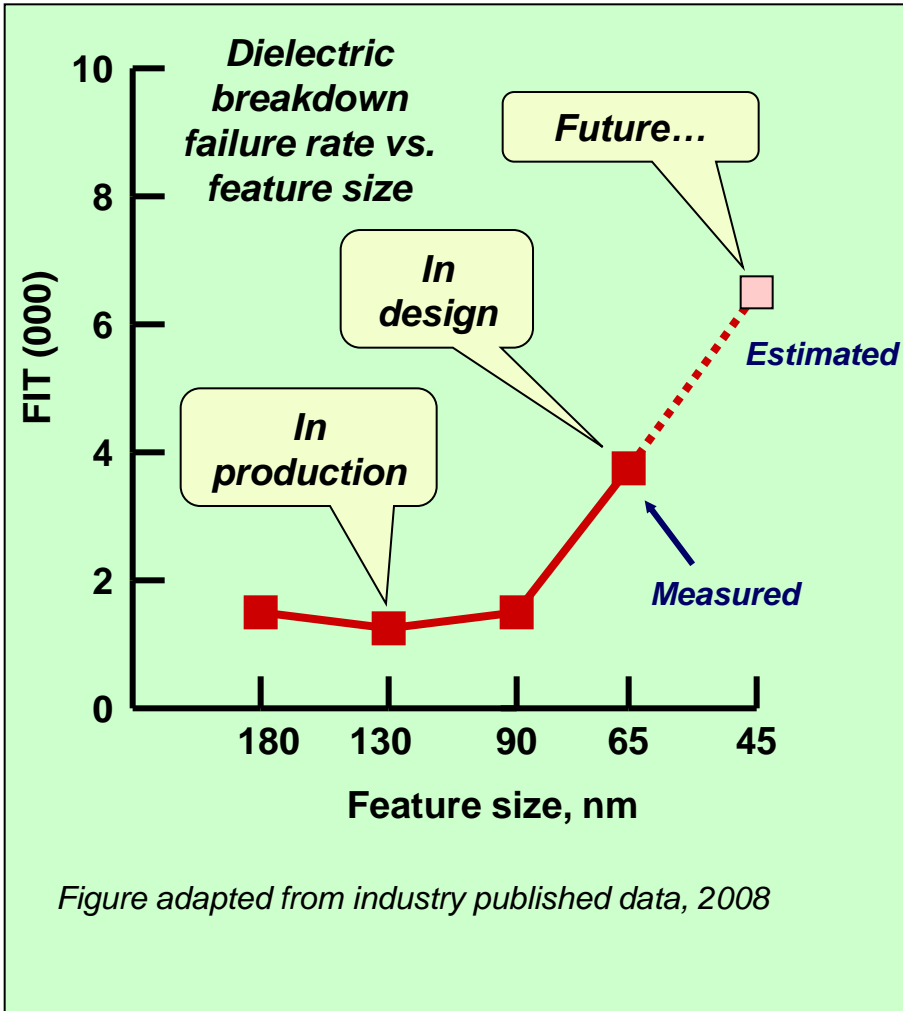
1. T.A. Mathewson, P. O'Sullivan, A. Concannon, S. Foley, S. Minehane, R. Duane, K. Palser, "Modeling and simulation of reliability for design", ELSEVIER Microelectronic Engineering vol. 49, pp. 95-117, 1999.
2. L. Yang, M. Cui, J. Ma, J. He, W. Wang, W. Wong, "Advanced Spice Modeling for 65nm CMOS Technology", in IEEE 9th Int. Conf. Rec. Solid-State and Integrated-Circuit Technology, 2008, pp. 436-439.
3. E. Wyrwas, "An Overview of the Methodology Used within the Integrated Circuit Reliability Prediction Software Tool per AVSI AFE #71", Aerospace Vehicle System Institute, 2009.
4. T. Smy, S. S. Winterton, "Simulation and analysis of electromigration failure distributions", ELSEVIER Microelectronics Reliability, vol. 34 No. 6, pp. 1047-1056, 1994.
5. J.M. Huang, W. Yang, Z.J. Zhao "Interconnect damage by electromigration: experiment and numerical simulation", Acta Metallurgica, vol. 47 no. 1, pp. 89-99, Sep. 1998.
6. Fen Chen, Rolf-Peter Vollertsen, Baozhen Li, Dave Harmon, Wing L. Lai, "A new empirical extrapolation method for time-dependent dielectric breakdown reliability projections of thin SiO₂ and nitride-oxide dielectrics", ELSEVIER Microelectronics Reliability, vol. 42, pp. 335-341, 2002.
7. J.H. Stathis, S. Zafar, "The negative bias temperature instability in MOS devices: A review", ELSEVIER Microelectronics Reliability, vol. 46, pp. 270-286, Sep. 2005. A. Teramoto, R. Kuroda, S. Sugawa, T. Ohmi, "Accurate negative bias temperature instability lifetime prediction based on hole injection", ELSEVIER Microelectronics Reliability, vol. 48, pp. 1649-1654, Aug. 2008.
8. M. Karam, W. Fikry, H. Haddara, H. Ragai, "Implementation of hot-carrier reliability simulation in Eldo", in IEEE Int. Symp. On Circuits and Systems, vol. 5, 2001, pp. 515-518.
9. J. B. Bernstein, M. Gurfinkel, X. Li, J. Walters, Y. Shapira, M. Talmor, "Electronic circuit reliability modeling", ELSEVIER Microelectronics Reliability, 2006, pp. 1957-1979.
10. S. Salemi, L. Yang, J. Dai, J. Qin, J. B. Bernstein, Physics-of-Failure Based Handbook of Microelectronic Systems. Reliability Information Analysis Center (RIAC), Utica, NY, 2008.
11. JEDEC Solid State Technology Association, "Failure mechanisms and models for semiconductor devices", JEP122-B, Aug. 2003.
12. F. Jensen, Fi. Jensen, P. Jensen, Electronic Component Reliability: Fundamentals, Modeling, Evaluation, and Assurance. England, John Wiley & Sons, 1995.
13. AVSI project AFE 17 reports
14. JEDEC Solid State Technology Association, "Reliability Qualification of Semiconductor Devices Based on Physics of Failure Risk and Opportunity Assessment", JEP148, Apr. 2004.
15. X. Li, J. Qin, and J.B. Bernstein, "Compact Modeling of MOSFET Wearout Mechanisms for Circuit-Reliability Simulation," IEEE Trans. on Device and Mat. Rel., vol. 8, no. 1, pp. 98-121 (2008)

Accurate Quantitative Physics-of-Failure Approach to Integrated Circuit Reliability

Authors: Edward Wyrwas (DfR Solutions, LLC)
 Lloyd Condra (The Boeing Corporation)
 Avshalom Hava (Motorola)



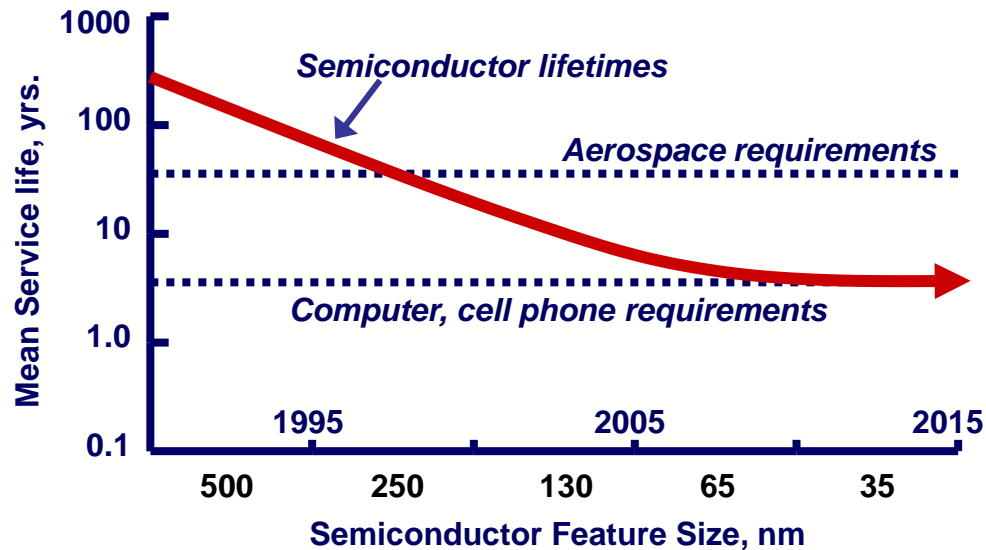
Trading Reliability for Performance



- Introduction of new technology corresponds to projections of Moore's Law
- 70% feature scaling every 2-3 years
- Smaller and Faster circuits cause
 - Higher current densities
 - Lower voltage tolerances
 - Higher electric fields
- Inherent Si-based failure mechanisms are manifested at these minute feature sizes

Failure rate data/projection from the aerospace industry (same application environment at each node)

High Reliability Requirements



- High Performance Commercial Off The Shelf (COTS)
 - Consumer purchasing drives the marketplace
 - Performance (Moore's Law trending) versus Reliability
 - Newest, smallest, fastest technology is designed for 3-5 year lifetime
 - Growing need to predict lifetime of these components for aerospace, defense and other high performance (ADHP) industries
 - Anticipated lifetime of 10 to 30 years for these electronics

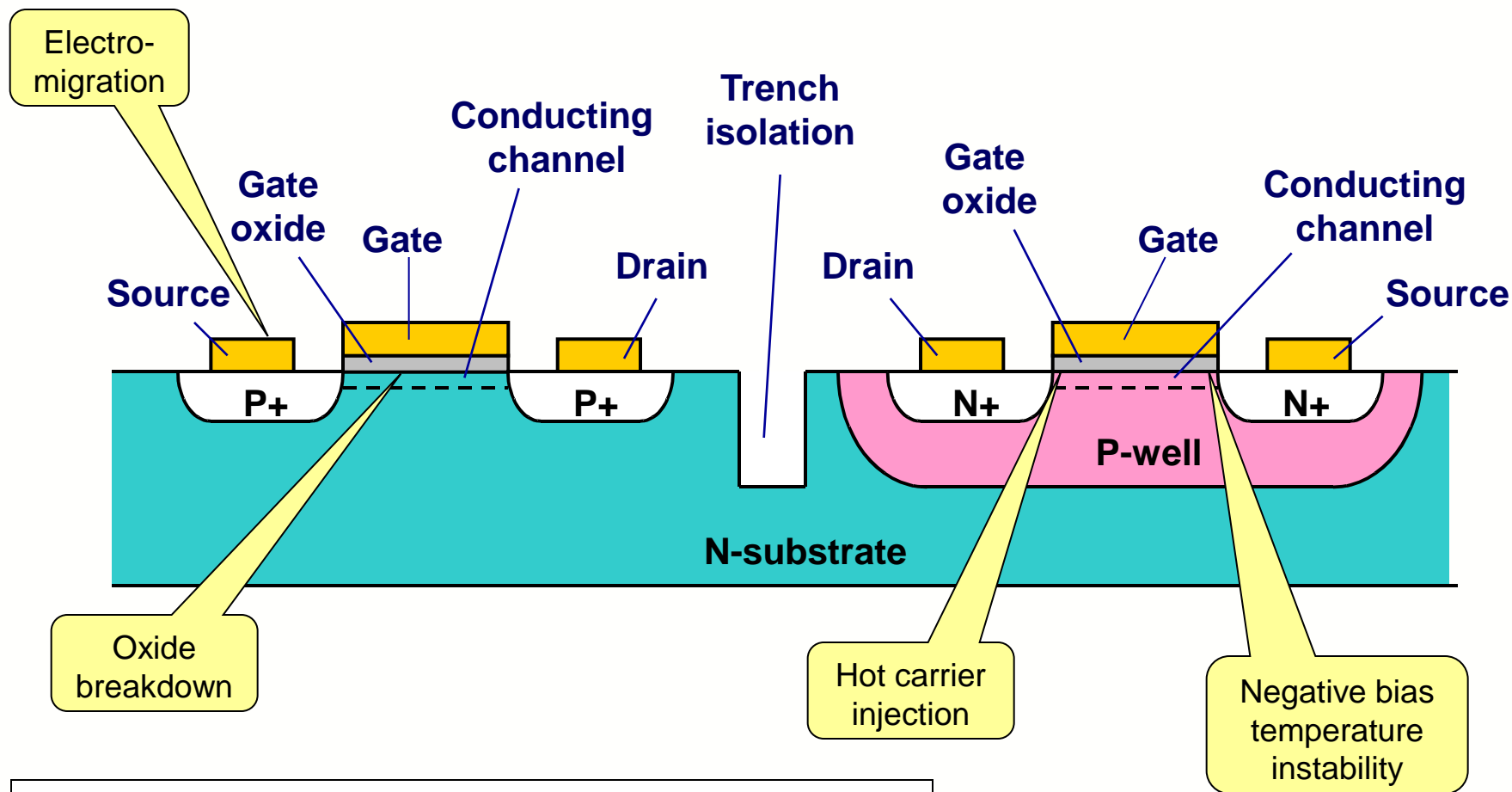
Modeling a Solution

- Create an easy to use software tool that can be used by multiple disciplines of engineers
 - Accessible component data (datasheet limitations)
 - Anticipated field conditions and component stresses
 - With minimal access to manufacturer data
 - Sometimes only censored data is available
- Back to the fundamentals
 - Transistor theory and circuit analysis
 - Physics-of-Failure (PoF) degradation models

"The notion that a transistor ages is a new concept for circuit designers," ... aging has traditionally been the bailiwick of engineers who guarantee the transistor will operate for 10 years or so...But as transistors are scaled down further and operated with thinner voltage margins, it's becoming harder to make those guarantees... transistor aging is emerging as a circuit designer's problem.

IEEE Spectrum, June 2009

Issues Inherent to CMOS Design



Artist depiction of CMOS transistors

Mitigation Through Design? TDDB

- Time Dependent Dielectric Breakdown (TDDB)
 - *Not so time dependent after all*
 - During feature scaling, the gate oxide thickness is scaled down
 - Power supply voltage is approximately the same as previous node
 - Increase in electric field on gate dielectric due to smaller thickness
 - What does this mean?
 - Instead of cumulative degradation from multiple breakdown sites causing failure after an undefined interval, one (1) breakdown site may cause immediate failure
 - *Mitigated by:*
 - Doping the dielectric (however, each dopant causes other issues)
 - High-k and Low-k dielectrics (scaling issue remains)
 - Changing the geometry/topography of transistor features (expensive)



Mitigation Through Design? EM

- Electromigration (EM)

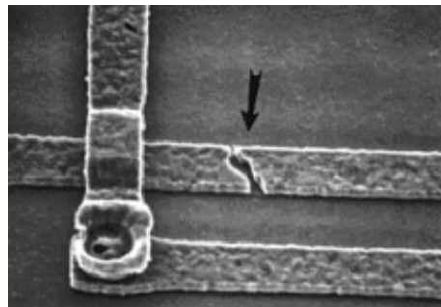
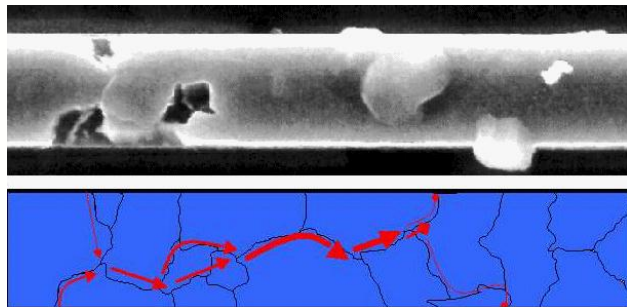
- *Dependent on conductor materials*

- Effects have already been mitigated a few times, but not solved

- Black's equation predicts time-to-failure
- Latest conductor change to a better Al + Cu alloy (~0.13 micron)

- *Mitigated by:*

- *Changes in trace geometries, polygons versus 90° angles, and trace width*
- *Drastic change in materials, i.e. carbon nanotubes or graphene*
- *Additions of more copper, silver, gold, etc.*

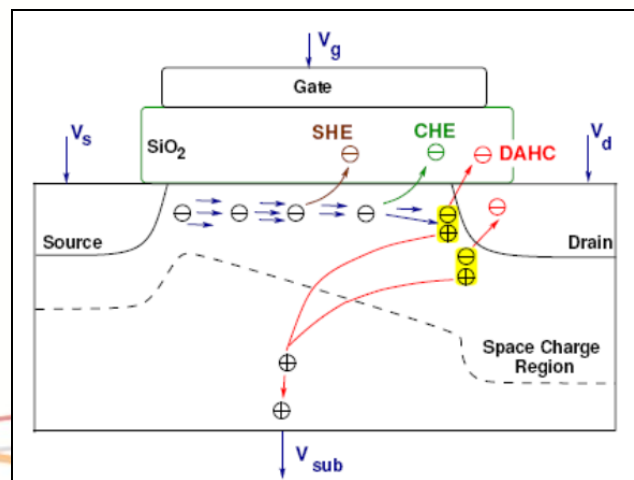


Damaging effects of
EM on conductors

Intrinsic Behavior and Wearout

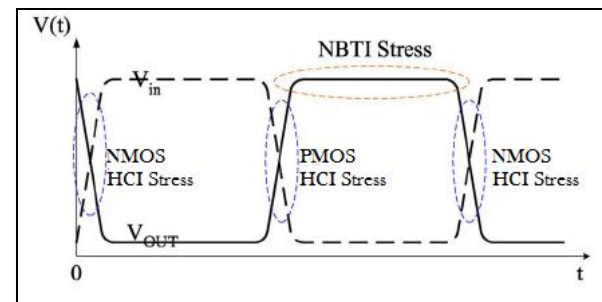
- Wearout because of transistor design
 - MOSFETs operate using electric fields (“field effect”)
 - BTI and HCI are driven by electric fields
 - New architectures experience these modes, i.e. FLASH memories
 - Floating gate transistor makes use of forced HCI and Fowler-Nordheim tunneling to store charge on the floating gate
 - Phenomenon of electrons and holes (carriers) gaining sufficient energy to overcome the direction of induced current and become injected in the gate oxide

Depiction of hot carrier effects on MOSFET



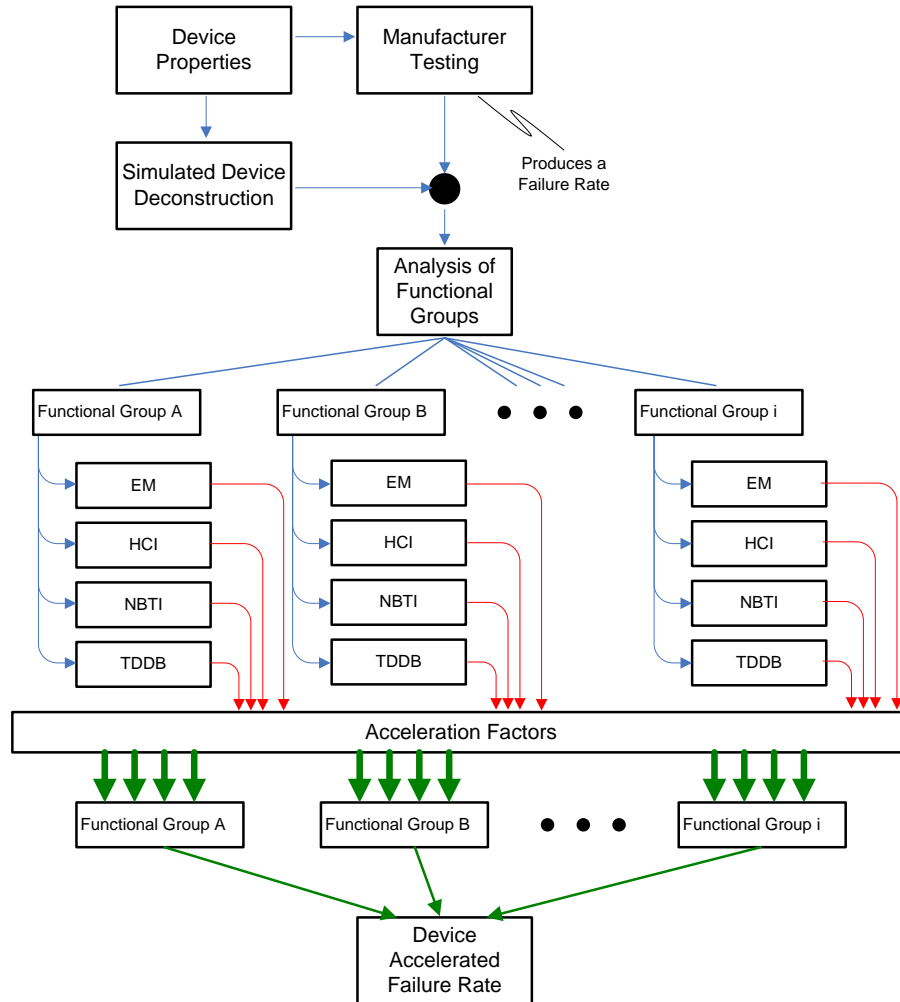
Intrinsic Behavior: HCI and BTI

- **Hot Carrier Effects or Injection (HCI) Characteristics**
 - Caused by a single carrier gains sufficient kinetic energy, or
 - Multiple carriers undergoing collisions that force them out of the directional path of electric field (the conducting channel)
 - HCI has inverse Arrhenius relationship
 - Activation energy -0.2 to -0.1 eV
 - Lower temperatures (~ 35 to $\sim 55^\circ$ C) increase vulnerability
- **Bias Temperature Instability**
 - Combined bias & temperature stresses are required for activation
 - Fluctuations in temperature (overall device + self heating property)
 - High temperatures cause molecular instability
 - Requires lower electric fields than HCI
 - Trap formation from electric fields are worse under negative bias (positive bias is $\sim 90\%+$ recoverable)



Transistor stress states relating to
HCI/NBTI damage (V_{in}/V_{out} curve)

IC Lifetime Prediction Methodology



- Models the simultaneous degradation behaviors of multiple failure mechanisms on integrated circuit devices
- Devised from published research literature, technological publications, and accepted degradation models from:
 - NASA\JPL
 - University of Maryland
 - Semiconductor Reliability Community

Generic, Industry Accepted Models

EM $\lambda_{EM} = A_{EM} J^n \exp\left(\frac{-E_{aEM}}{\kappa T}\right)$

HCI $\lambda_{HCI} = A_{HCI} \left(\frac{I_{sub}}{W}\right)^m \exp\left(\frac{-E_{aHCI}}{\kappa T}\right)$

TDDDB $\lambda_{TDDDB} = A_{TDDDB} A^{\frac{1}{\beta}} V_{gs}^{a+bT} \exp\left(\frac{c}{T} + \frac{d}{T^2}\right)$

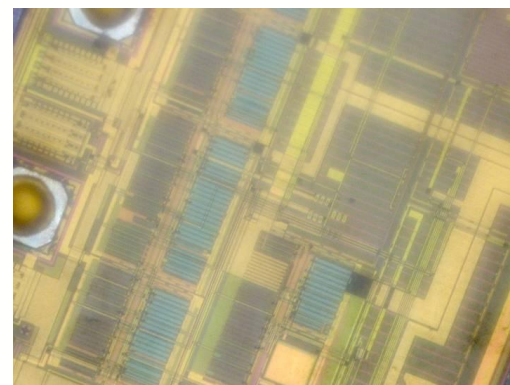
NBTI $\lambda_{NBTI} = A_{NBTI} V_{gs}^{\frac{1}{\tau}} \left[\frac{1}{1 + 2 \exp\left(-\frac{E_1}{\kappa T}\right)} + \frac{1}{1 + 2 \exp\left(-\frac{E_2}{\kappa T}\right)} \right]^{\frac{1}{\tau}}$

A_{EM} , A_{HCI} , A_{TDDDB} , A_{NBTI} , E_{aEM} , E_{aHCI} , n , m , α , β , τ , a , b , c , d , E_1 and E_2 are all technology-related parameters.

- Parameters that drive failure
 - Temperature
 - Current and Current Density
 - Voltages
- Extrapolate from test to field

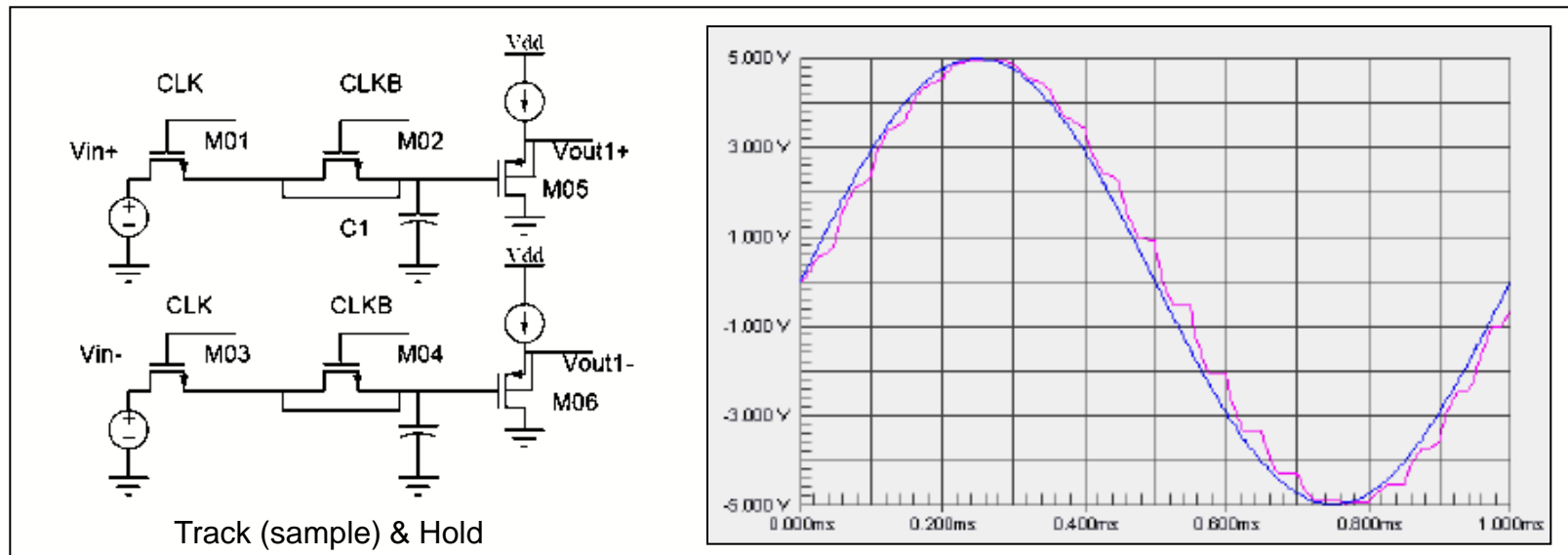
What Influences Failure Rate?

- Integrated circuit materials and complexity
 - Information gathered from component documentation
 - Technology node or feature size (i.e. 90nm)
 - Corresponding material set (e.g. Si, GaAs, SiGe, GaN and SOI)
 - Functional complexity
 - Identified as functional groups within a circuit
 - Operating conditions
 - Voltages, frequencies, currents, and temperature
- Degradation mechanisms
 - PoF knowledge and analysis
 - Transistor stress states
 - Functional group susceptibility
 - Electrical and thermal conditions



Transistor Stress States

- Establish relevancy of failure mechanisms and inputs into PoF algorithms based on
 - Quantity and location of transistors within circuit
 - Probabilistic likelihood of applied operation conditions through background simulation of each functional group



Transistor stress state analysis on Track and Hold functional group

Mathematical Theory

- Model of a device failure rate considering the tiers of system and device level inputs
 - λ_T is the failure rate of the device under analysis
 - λ_i is the normalized failure rate of a failure mechanism within a given functional group
 - $K_{i,F}$ is a constant defined by the weight percentage of functional group F as it affected by the i^{th} failure mechanism
 - P_F is the probability of functional group failure from one functional group cell
 - N_F is the total number of cells in each functional group
 - N is the total number of functional groups across all types
- Acceleration factors can be applied at the transistor level to extrapolate from known device test conditions to a known system field environment

$$\lambda_T = N \times \sum (N_F / N) \times P_F \times \sum (K_{i,F} \times \lambda_i)$$

Snapshot of the Software Tool

IC Reliability Prediction Tool

v1.3

Part Model Test Help

Enter the identification information for the IC to be analyzed:

Part Manufacturer: National Semi

Part Number: ADC1248021

Part Description: 453-00001

Production Years: Over 5 Years

Select the technology node of the IC to be analyzed:

Node Size: 350 nm

Enter the quantity of each function group (e.g., sample each functional group can typically be found in a parts in a description of the component features).

Sample & Hold: 16384

PreAmp: 16384

1st Stage Comparator: 8192

2nd Stage Comparator: 4096

SRAM (bits): 0

DRAM (bits): 0

Ring Oscillator (stages): 0

IC Reliability Prediction Tool

v1.3

Part Model Test Help

Enter the results from integrated circuit testing.

Number of Failures: 0

Number of Devices: 25

Test Duration (hrs): 1000

Device Duty Cycle (%): 31.25

Confidence Level: 50%

Enter one or more operating modes for the IC being tested. Each operating mode can be specified with either a Fixed Temperature or a pre-defined Temperature Profile. The analysis results will be averaged across all temperatures and operating modes specified. The 'Duration' values are used as weights when computing the average across operating modes.

	Temp Profile	Temp (C)	Freq (MHz)	Core (V)	Supply (V)	Duration
1	Arizona	40	500	1.2	3.3	1.0
2						
3						
4						

Enter the test parameters used for all operating modes:

Temperature (C): 85

Frequency (MHz): 500

Core Voltage (V): 1.2

Supply Voltage (V): 3.6

Nominal Core Voltage (V): 1.2

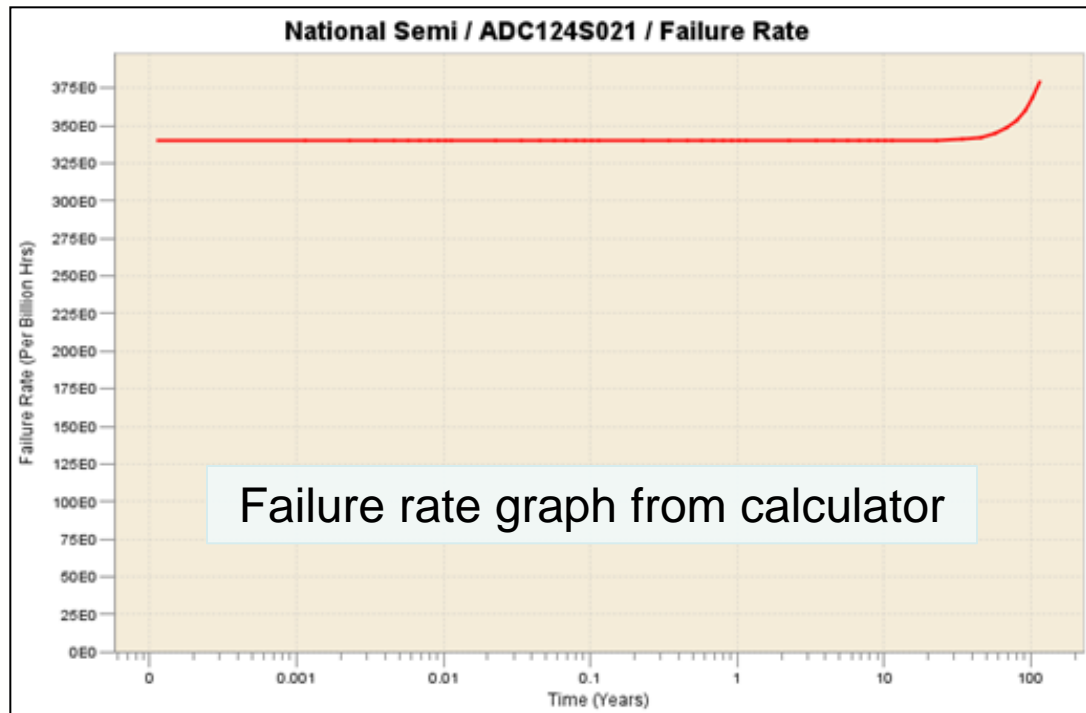
Inputs:

- Component information
 - Feature size
 - Complexity
 - Test data
 - Operating modes
 - Electrical conditions
- System Information
 - Temperature profiles
 - Duty cycle
- Confidence level

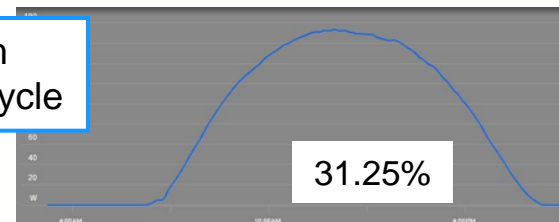
Outputs:

- Device reliability
- Device failure rate

Example: National Semi 12-bit ADC

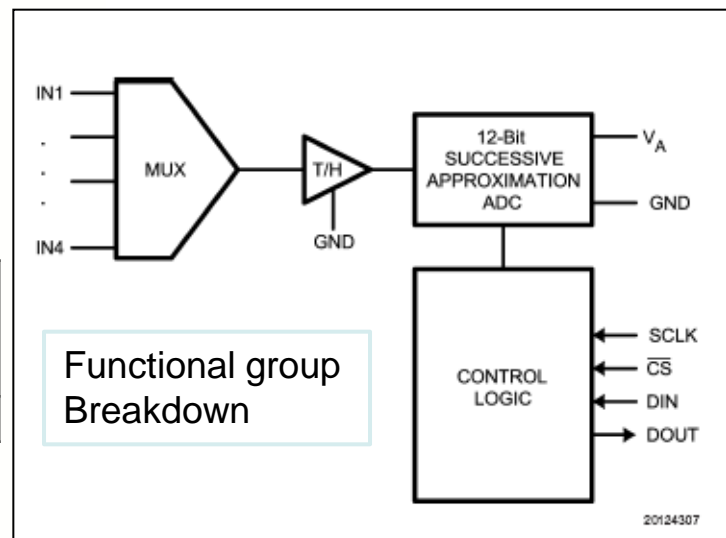


System
Duty Cycle



System
Temperature Profile

Peak Temperature (°C)	Percentage of Calendar Year
40	4.1%
	17.8%
	21.9%
	12.6%
60	20.8%
70	22.7%



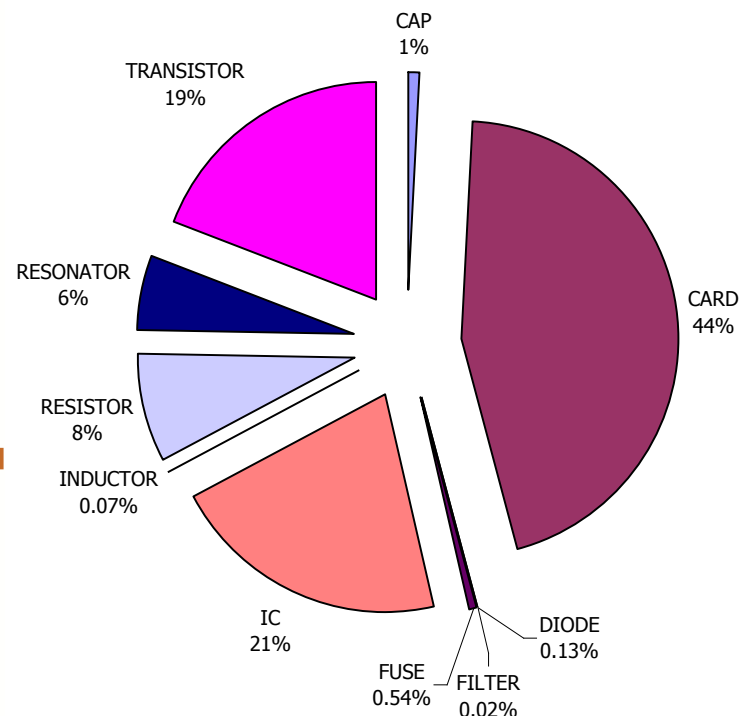
Part Number	Process Technology	Field Voltage (V)	Test Voltage (V)	Field Temperature (° C)	Test Temperature (° C)
ADC124S021	350nm	3.3	3.6	Profile	85.0

Device characterization

The resultant failure rate is based on full utilization of device features under these specific conditions

Validation Study

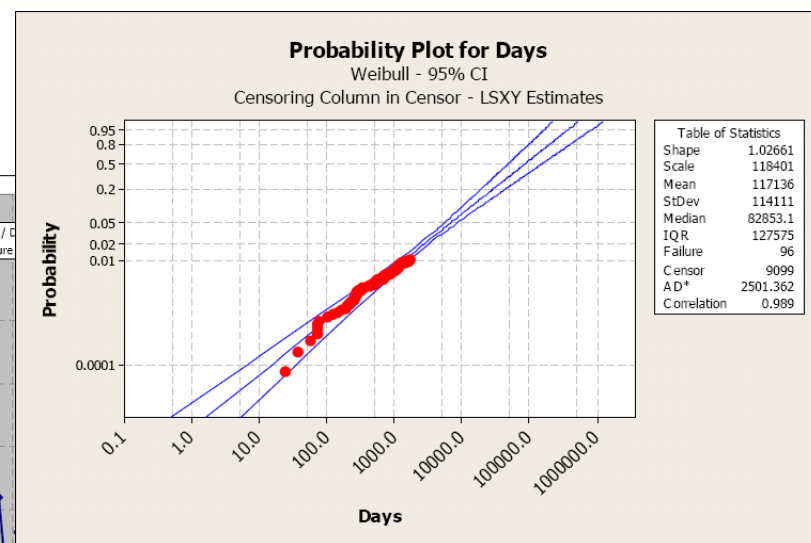
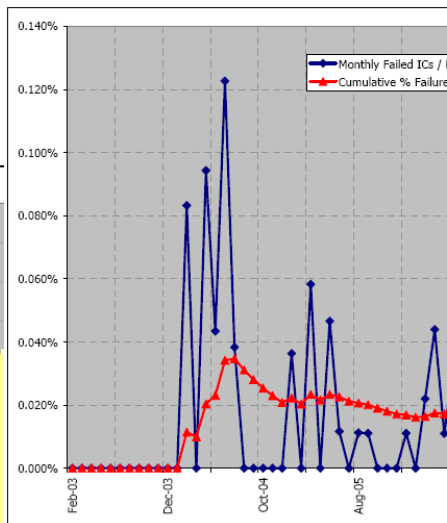
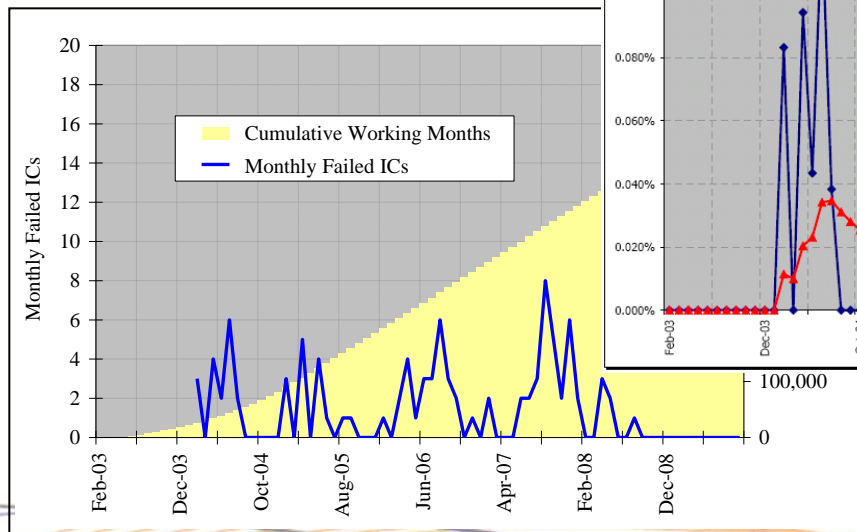
- Motorola field return data was gathered from family of telecommunication products
 - 56 different ICs comprised 41.5% of the failed part population
- The validation activity was utilized failure data from 5 integrated circuits



<u>MFG</u>	<u>MFG Part Number</u>	<u>Year</u>	<u>Description</u>	<u>Quantity Replaced</u>
HYNIX	HYMD512M646BF8-J	2004	1GB, DDRAM, MW800	190
MICRON	MT16LSDF3264HG-10EE4	2001	IC,SDRAM,2048MB,32M X 64,DIMM144,64MSRFRSH,MAX SUPPLY VOL 3.6V	152
SAMSUNG	M470L6524DU0-CB3	2005	DDR SDRAM SODDIM 512MB	161
FREESCALE	MC68HC908SR12CFA	2002	IC,MICROCONTROLLER,MC68HC908SR12CFA,,L QFP48,,,512BYTE,,,12288BYTE	114
INTEL	RH80536GC0332MS L7EN	2005	IC,MICROPROCESSOR,SM,PENTIUM,1800MHZ,3 2BITS,2097152BYTE	18

Statistical Analysis on Field Returns

- Failure rate was calculated from raw data
 - Environmental conditions to determine in-field operating temperature
 - Thermal measurements to determine power dissipation
 - Cumulative failure distributions
 - Weibull
 - Exponential



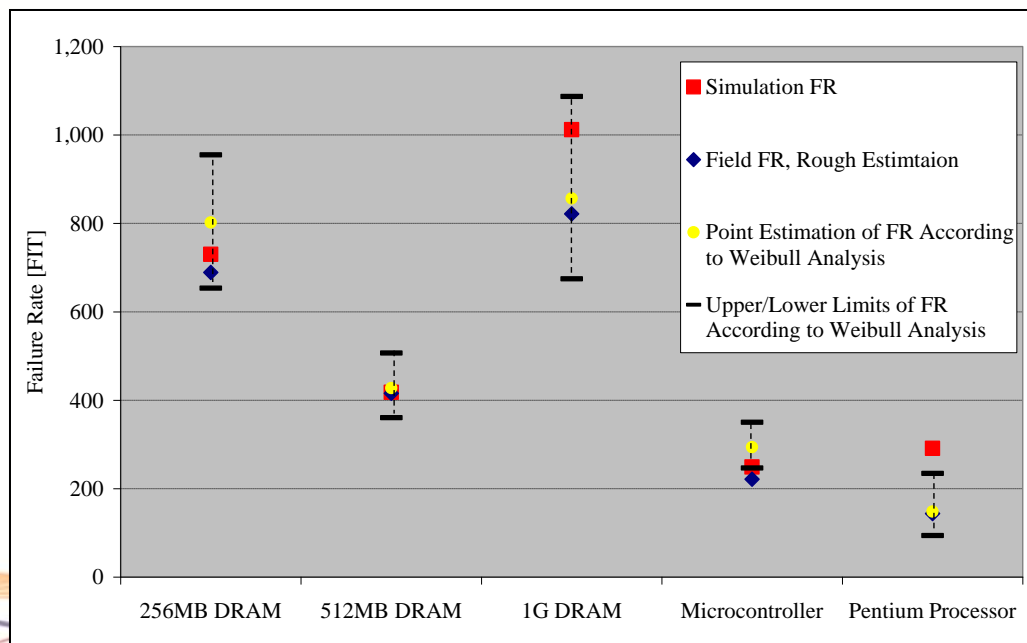
Extracted graphs from statistical analysis of field returns

Lifetime Prediction

Component Information:

Part Number	Description	Vendor	Node Technology	Field Temp. (C)	Calculated Test Temp. (C)	Vdd Field (V)	Vdd Test (V)
MT16LSDF3264HG-10EE4	256MB DRAM	Micron	150 nm	42	62.28	3	3.3
M470L6524DU0-CB3	512MB DRAM	Samsung	100 nm	42	70.00	2.5	2.7
HYMD512M646BF8-J	1GB DRAM	Hynix	110 nm	42	66.68	2.6	2.7
MC68HC908SR12CFA	Microcontroller	Motorola/ Freescale	90 nm	40	77.40	5	5.5
RH80536GC0332MSL7EN	Pentium Processor	Intel	90 nm	58	99.70	1.276	1.34

Failure rates and limits



Comparison of Results

- JEDEC 47D HTOL

- **Typical High Temperature Operating Life (HTOL) Test**
 - Stated purpose is to simulate many years of operation at ambient, by testing at elevated temperatures and voltages
 - Test 77 pieces/qualification lot for 1000 hrs at 125°C (junction)
 - Zero failures
- **Acceleration Factor**
 - Accelerate via Arrhenius model with $E_a=0.7$ eV
- **Result**
 - For 3 lots (231 pcs) and operating temp of 55°C, the field operating time is ~18 million hours. At 60% confidence, *the failure rate is 51 FITs*

P/N	Field	Calculated	HTOL
256MB DRAM	689	730	51
512MB DRAM	415	418	51
IGB DRAM	821	1012	51
microcontroller	220	249	51
microprocessor	144	291	51

Comparison of Results

- Parts Count MTBF

- **Telcordia TR-322: Reliability Prediction Procedure for Electronic Equipment**
 - Last Revision: Issue 6, December 1997
 - Replaced by SR-322, September 2006
- **MIL-HDBK-217F (Notice 2): Reliability Prediction of Electronic Equipment**
 - Last Revision: February 28, 1995 (per DoD repository)

Part Number	Field Failure Rate	Predicted Failure Rate	TR 322*	MIL 217F(2)*
MT16LSDF3264HG	689	730	15.4	18.6
M470L6524DU0	415	418	15.4	18.6
HYMD512M646BF8	821	1012	15.4	18.6
MC68HC908SR12CFA	220	249	27.0	18.1
RH80536GC0332MSL7EN	144	291	67.5	2691.3

*TR-322 and MIL-217-F(2) calculations performed using ALD Ltd. MTBF Calculator.

Application of Results

- **Industry Standards**
 - *VITA 51.2, Physics of Failure Reliability Predictions*
 - *MIL-HDBK-217J, Reliability Prediction of Electronic Systems*
 - *Addition of Physics-of-Failure requirements*
 - *IEC TS 62239, Preparation of an Electronic Component Management Plan*
 - *Addition of a wearout requirement*
- **Certification requirements**
 - *ARP 4761*
 - *ARP 5890*
- **Platform customer requirements**



Where Can We Go From Here?

- Future roadmap of existing features:
 - 65nm, 45nm, 32nm, 22nm technologies
 - Additional functional groups
 - Digital including logic and conditioners (e.g. gates)
 - Analog for signal processing (e.g. opamps)
 - Processor based (DSP, FPGA, etc)
- Customizable equivalent circuits and automated functional group analysis for ASIC design
- “Expert mode”
 - Modification of all default parameters
- Tradeoff analysis
 - Performance vs. Reliability



Questions?

- Q & A
- Would you like additional information?
 - Contact:

Edward Wyrwas

Director of Information Technology (CIO)

Member of Technical Staff

ewyrwas@dfrsolutions.com

DfR Solutions The logo for DfR Solutions, featuring the text "DfR Solutions" in a blue, serif font, followed by a horizontal line and a circular graphic element.

DfR Solutions, LLC

5110 Roanoke Place, Suite 101, College Park, MD 20740

(301) 474-0607 x304 <ph> (866) 247-9457 <fax> www.dfrsolutions.com